

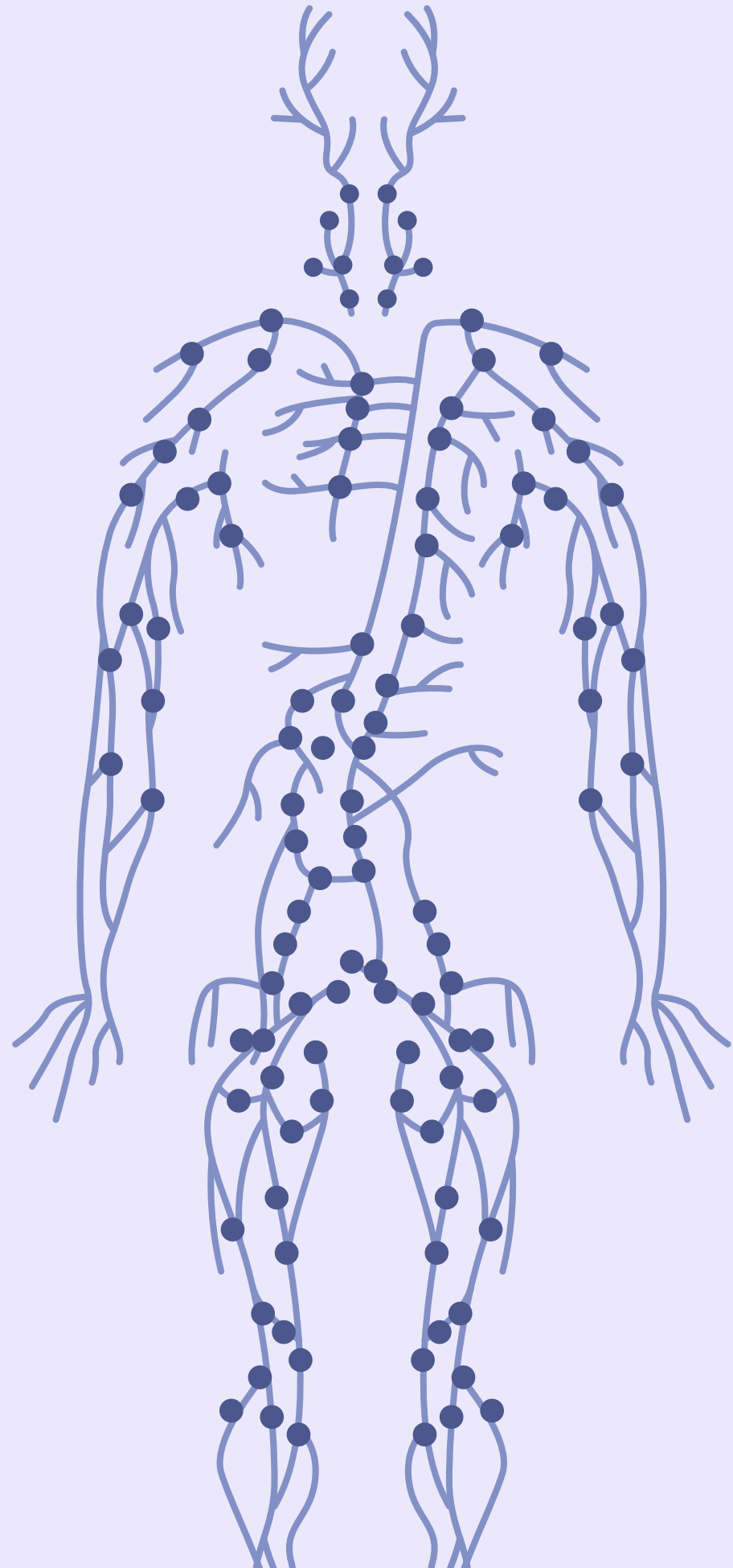
The background features a light purple gradient with a white silhouette of a human figure. Scattered around are various biological and food-related icons: red blood cells, blue spiky microorganisms, raspberries, and a stylized orange and red organ (possibly a stomach or liver) with blue dots. The main title is centered over the silhouette.

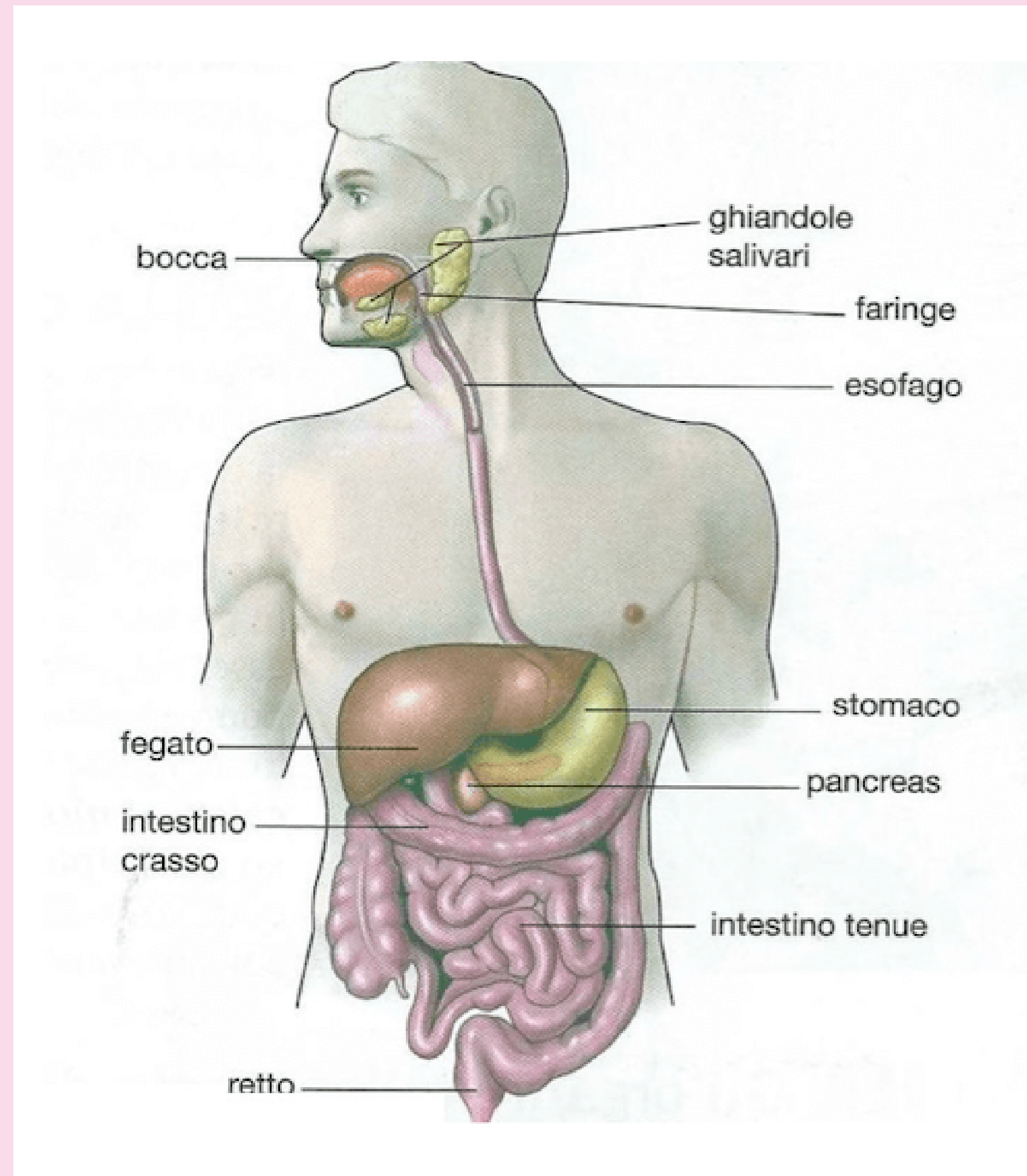
CONOSCI IL TUO ORGANISMO?

Fisiologia dell'apparato
digerente

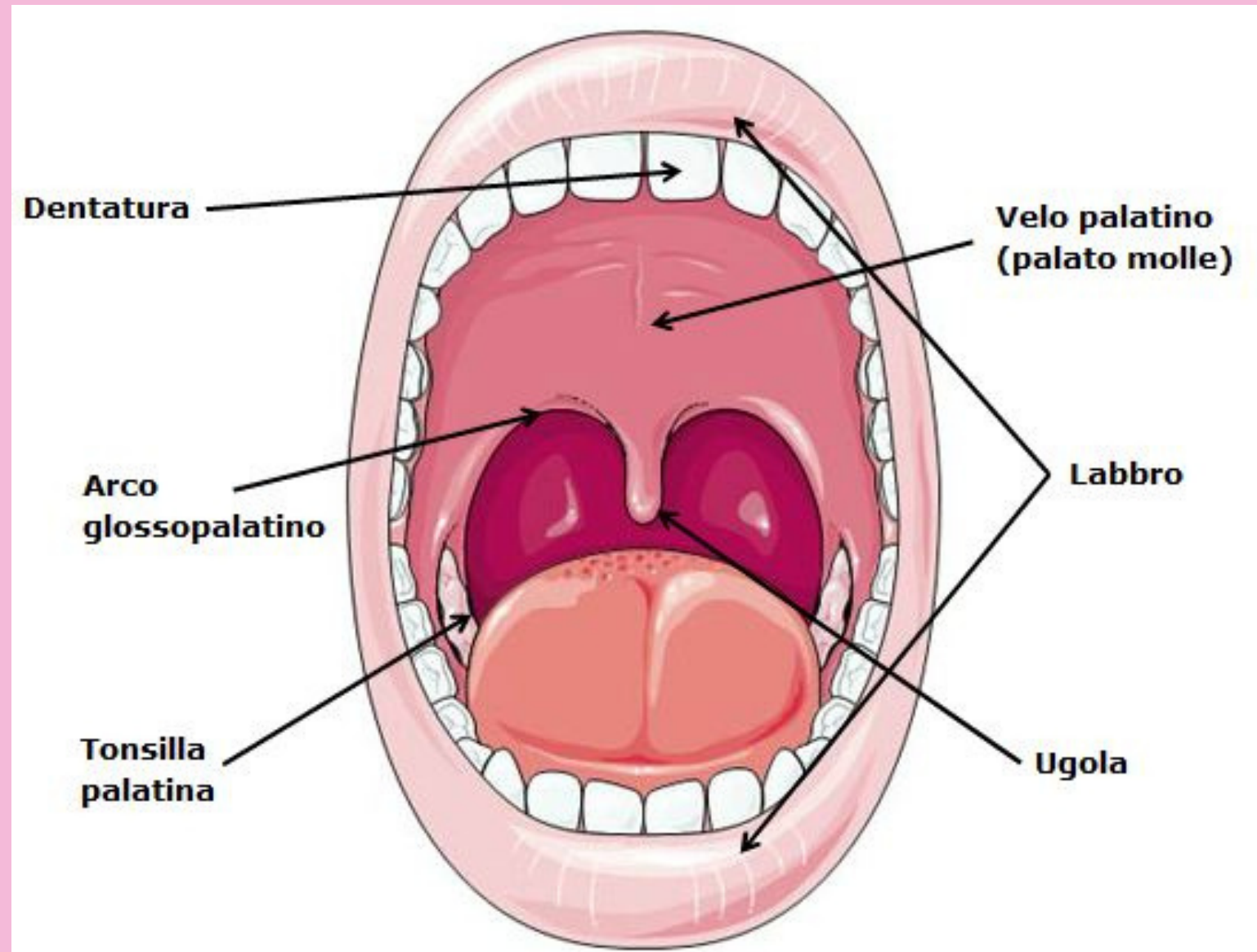
STRUTTURE ED ANATOMIA

- Bocca
- Esofago
- Stomaco
- Intestino
- Fegato
- Pancreas





BOCCA



Funzioni

- Digestiva: meccanica e chimica
- Gustativa
- Respiratoria
- Fonatoria

BOCCA E PRIMA DIGESTIONE

01

DIGESTIONE MECCANICA

Sminuzzamento, rimescolamento
Teoria del “Fletcherianesimo”

02

DIGESTIONE CHIMICA

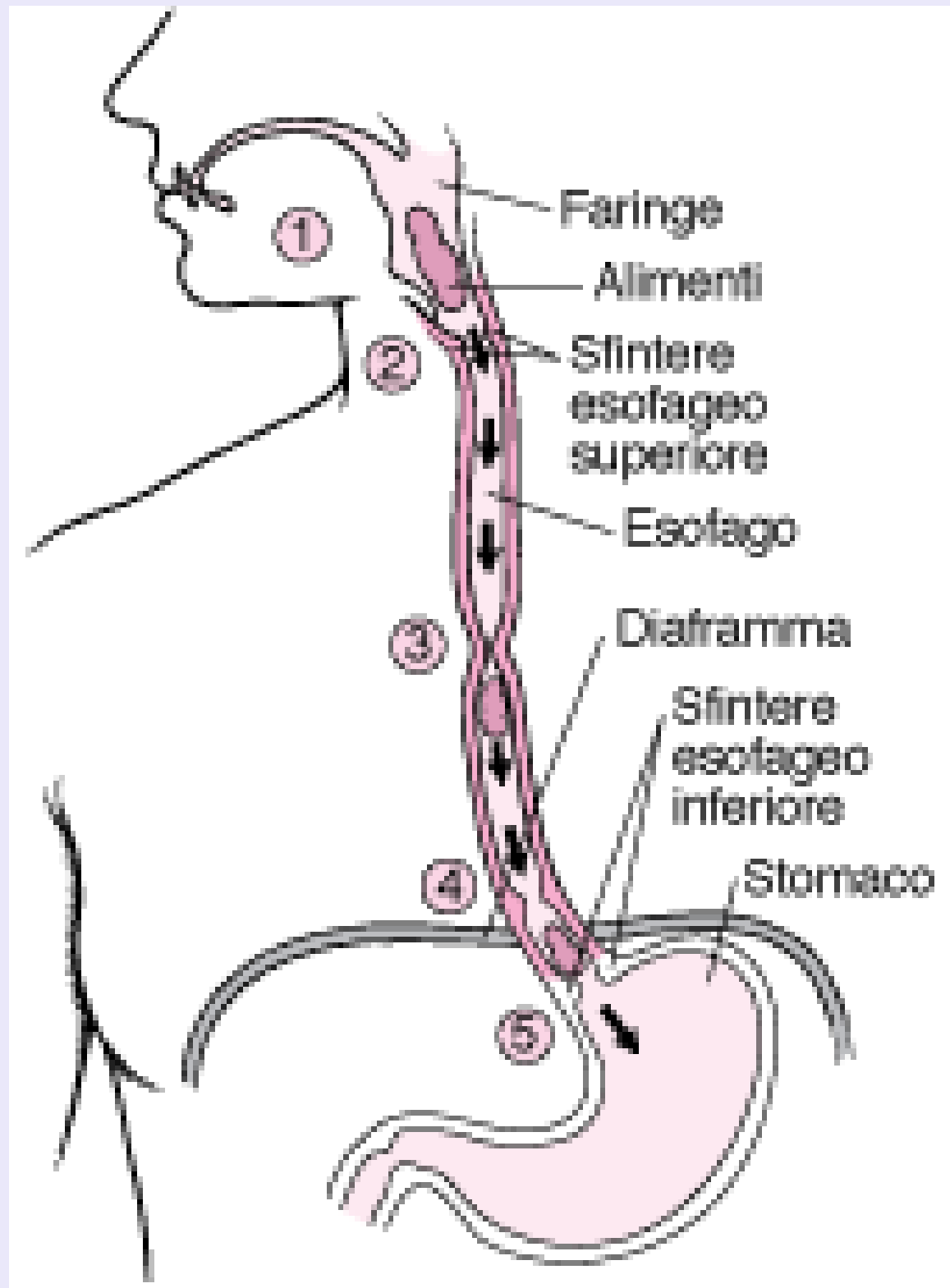
Ptialina e Lisozima

03

DEGLUTIZIONE

Bolo alimentare, Faringe e funzione dell'Epiglottide

ESOFAGO

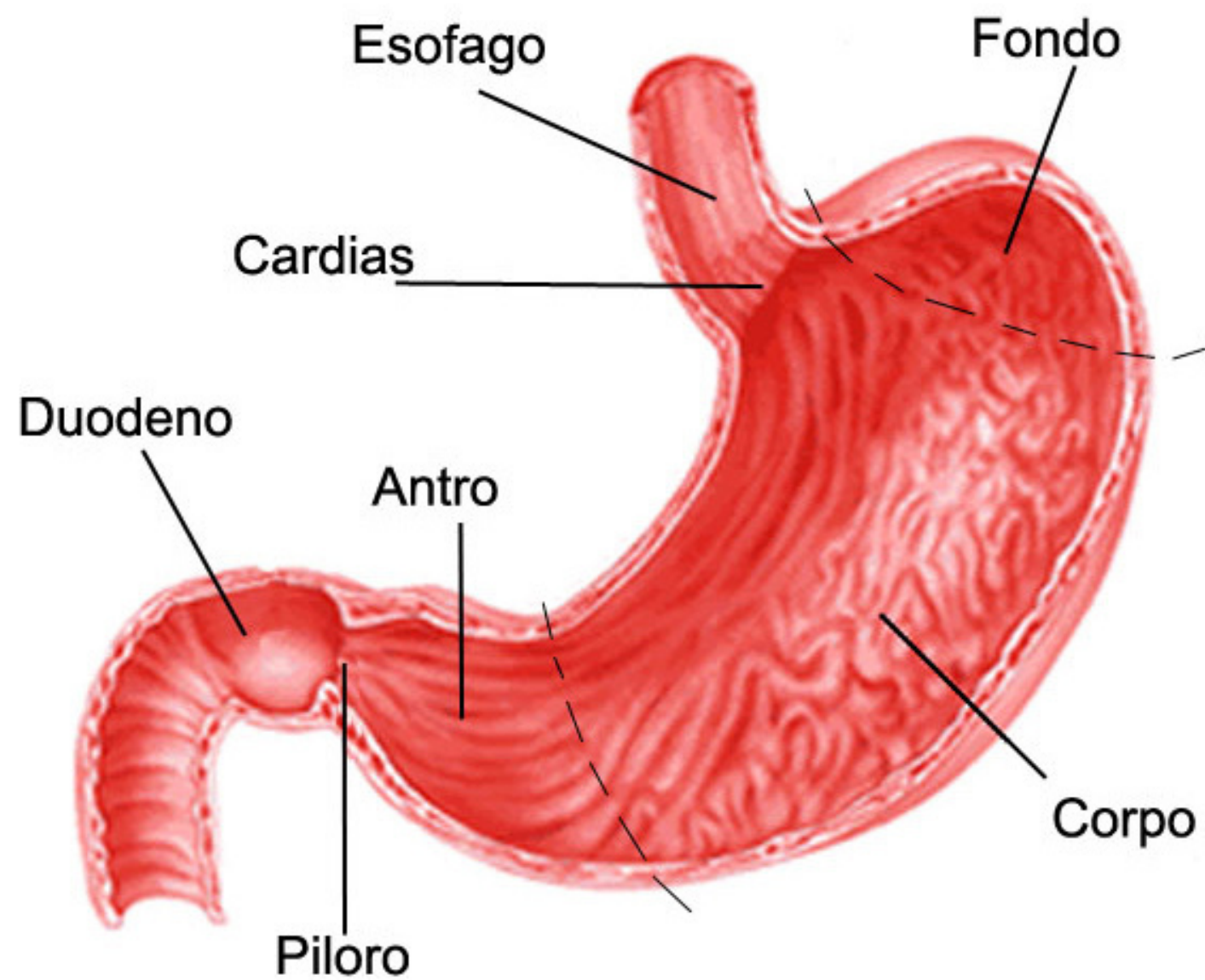


- Transito del bolo alimentare
- Controllore della discesa:

Peristalsi primaria
Peristalsi secondaria

- Cardias

STOMACO



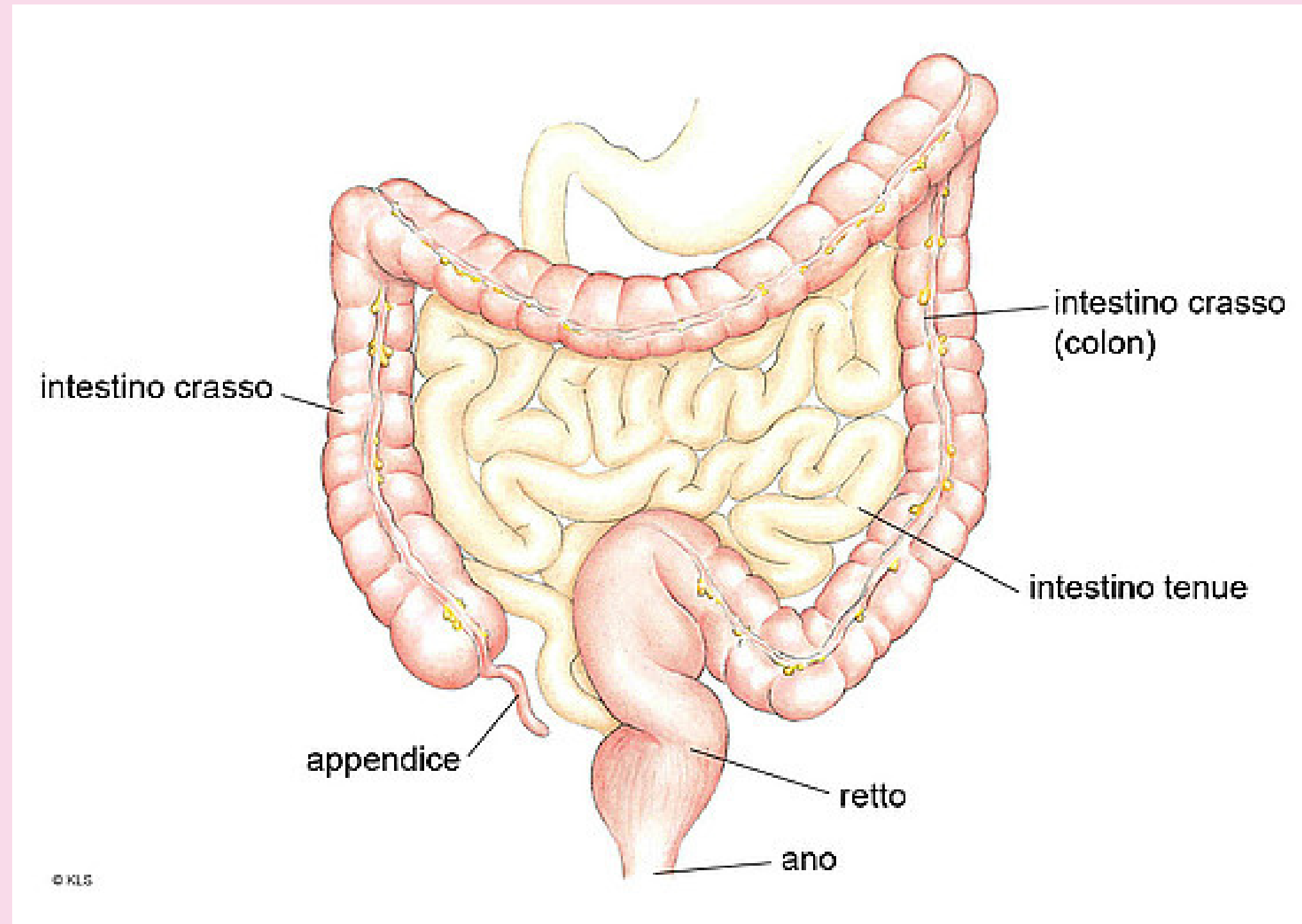
Funzioni

- Digestiva:

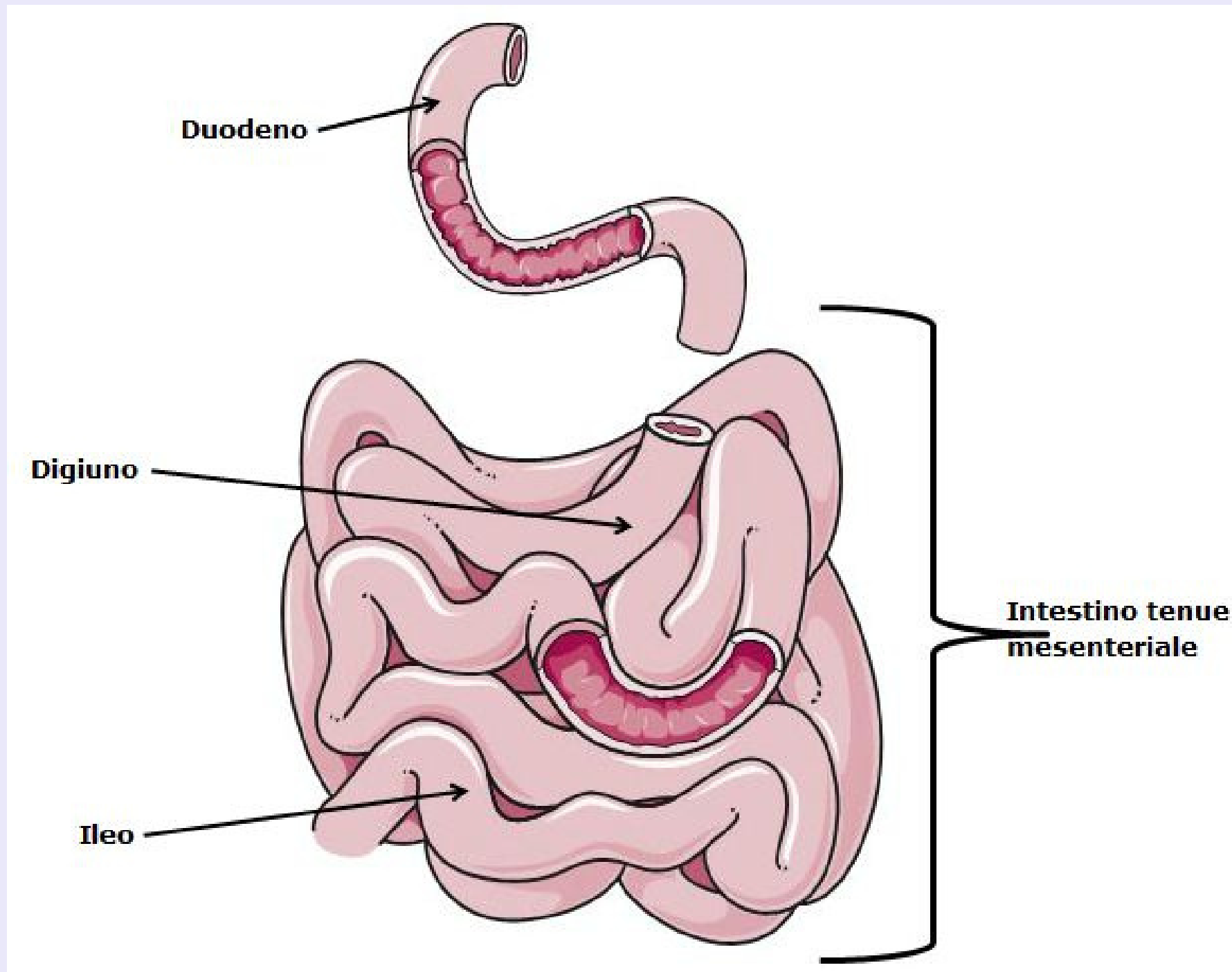
Proteine
Grassi

- D'assorbimento
- Endocrina

INTESTINO



INTESTINO TENUE



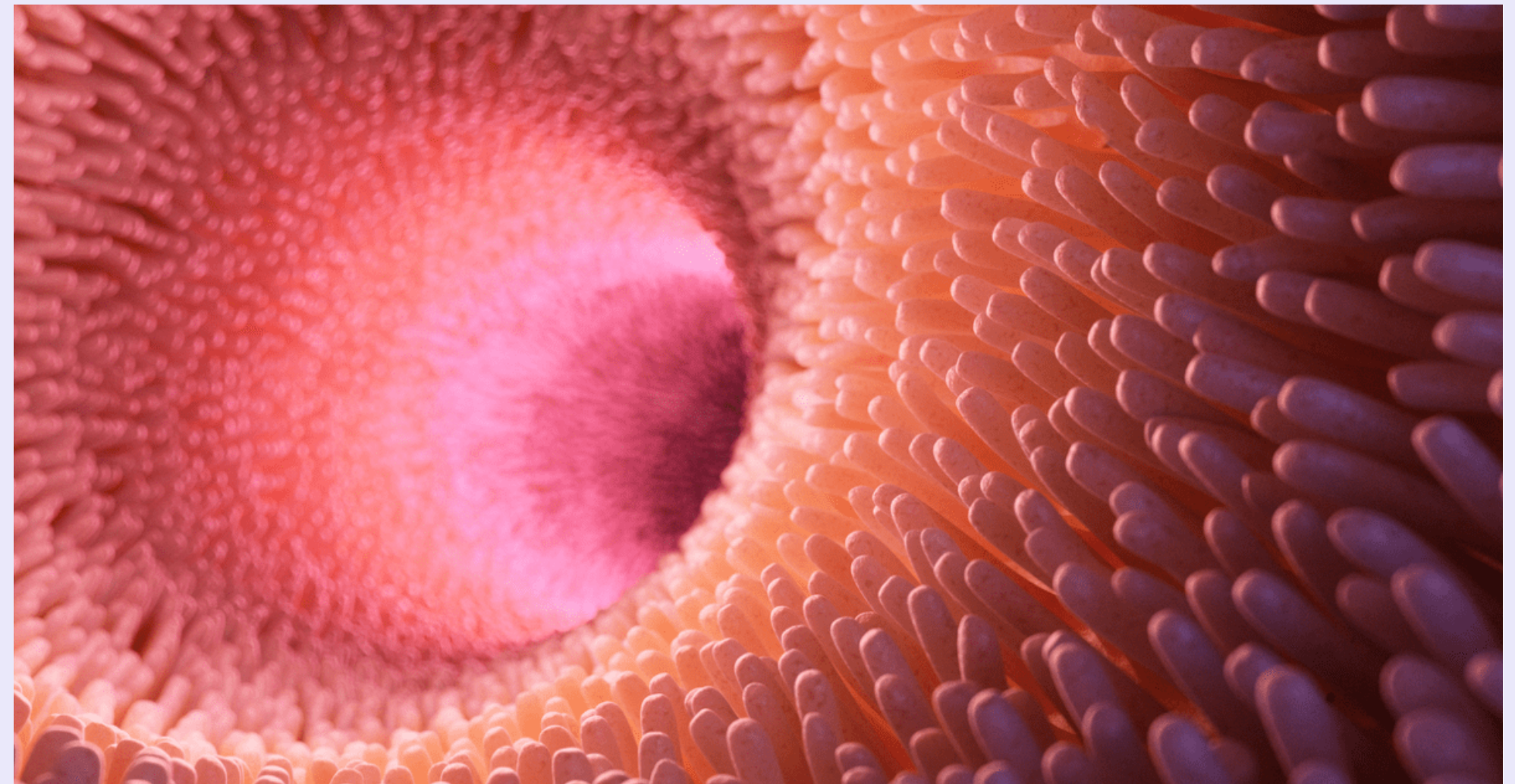
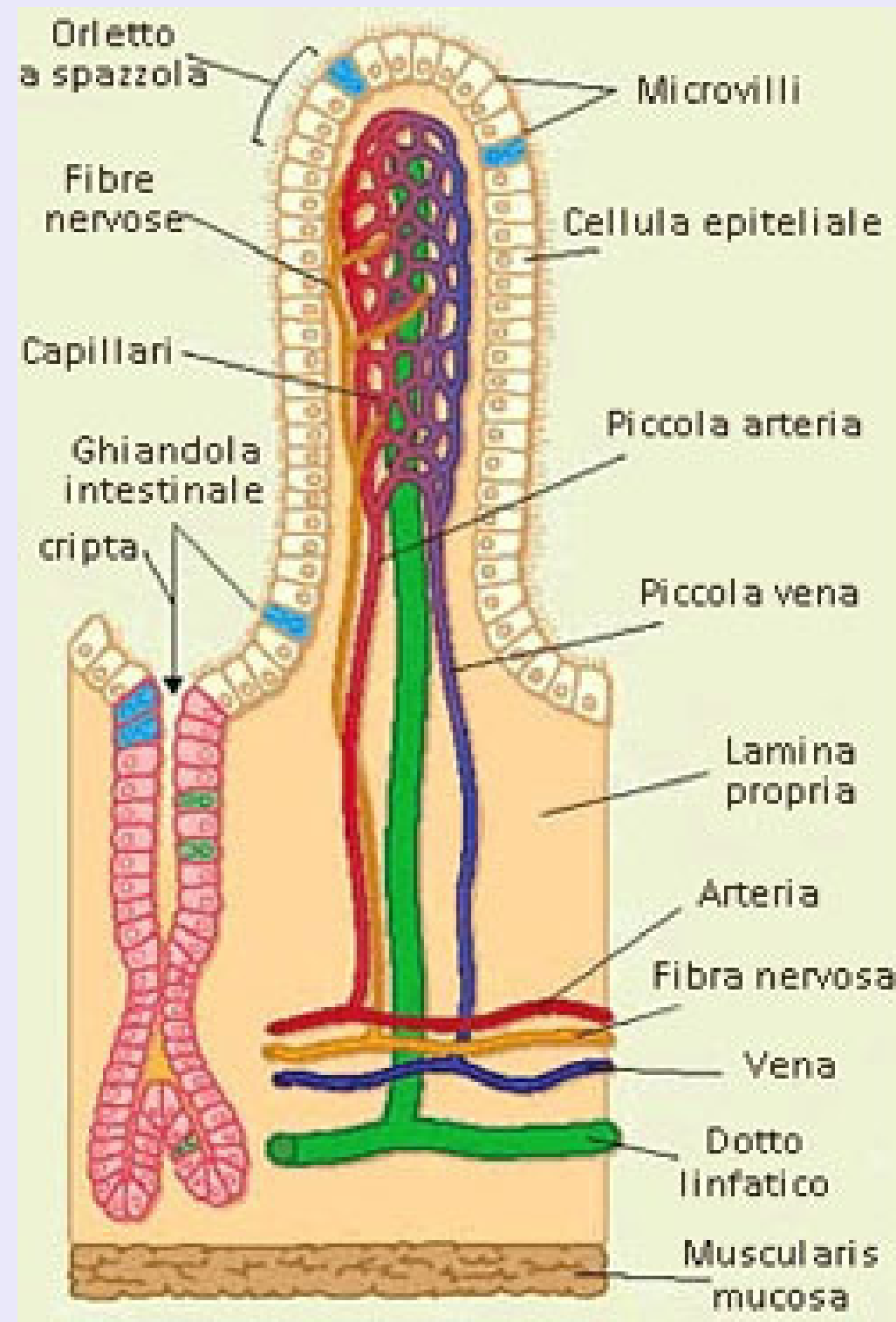
ANATOMIA

- Duodeno
- Digiuno
- Ileo
- Valvola ileo-cecale

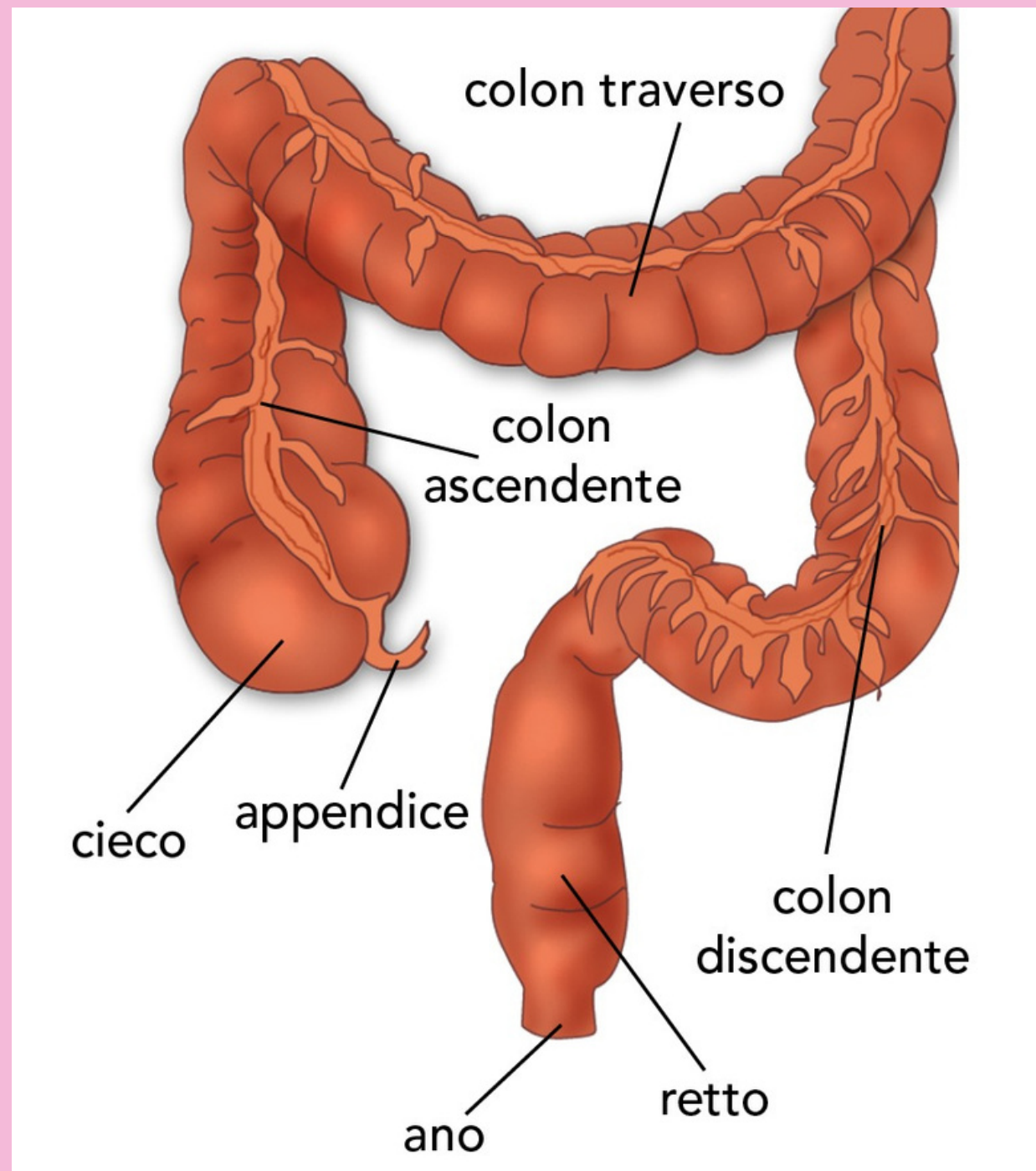
FUNZIONI

- Digestiva (succhi enterici)
- Secretiva (muco protettivo)
- Endocrina
- D'assorbimento

VILLI INTESTINALI



INTESTINO CRASSO



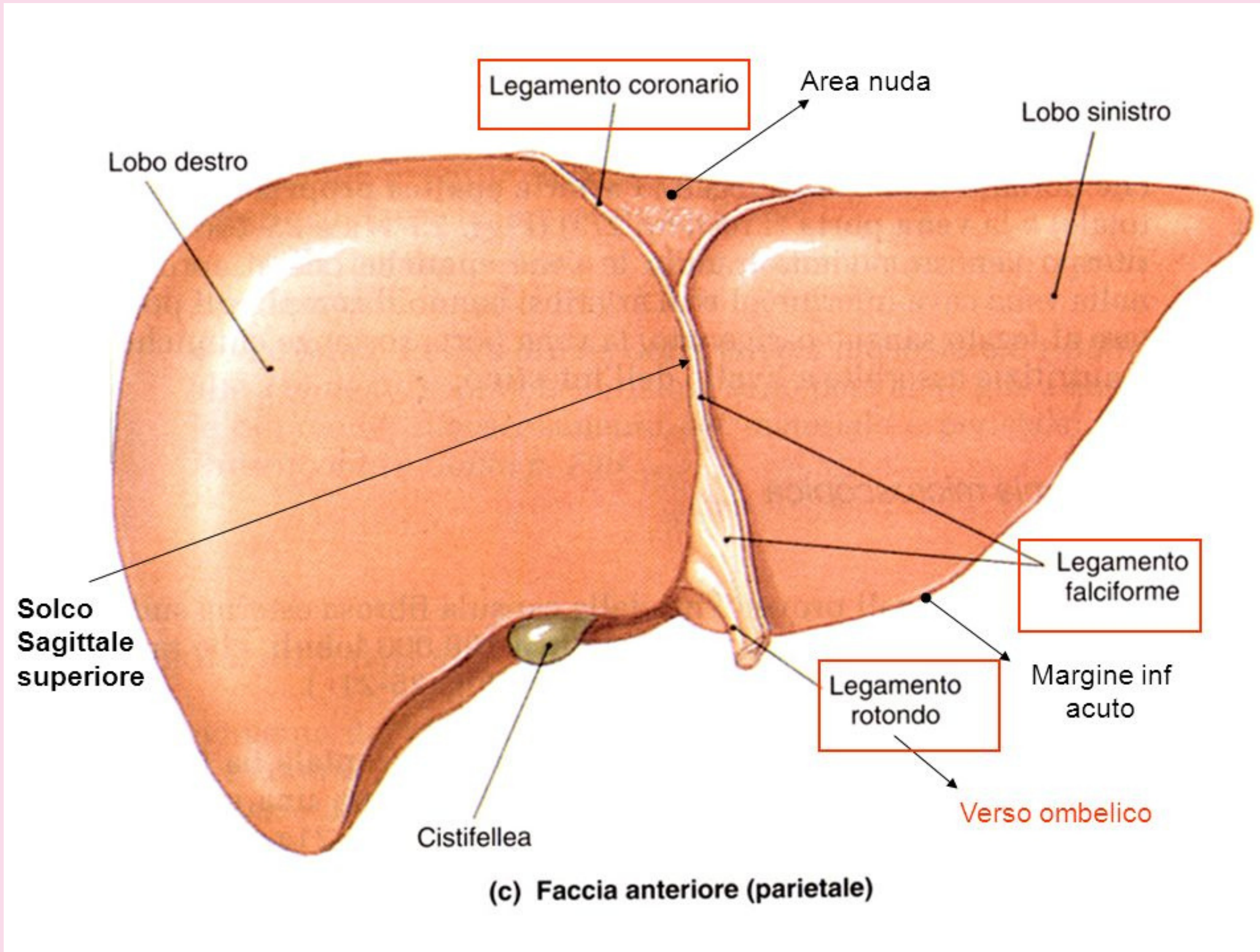
Anatomia

- Intestino cieco
- Colon ascendente
- Colon trasverso
- Colon discendente
- Retto

Funzioni

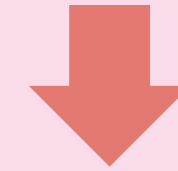
- D'assorbimento
- Accumulo
- Decomposizione ed evacuazione

FEGATO

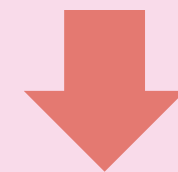


Anatomia

2 lobi



8 segmenti

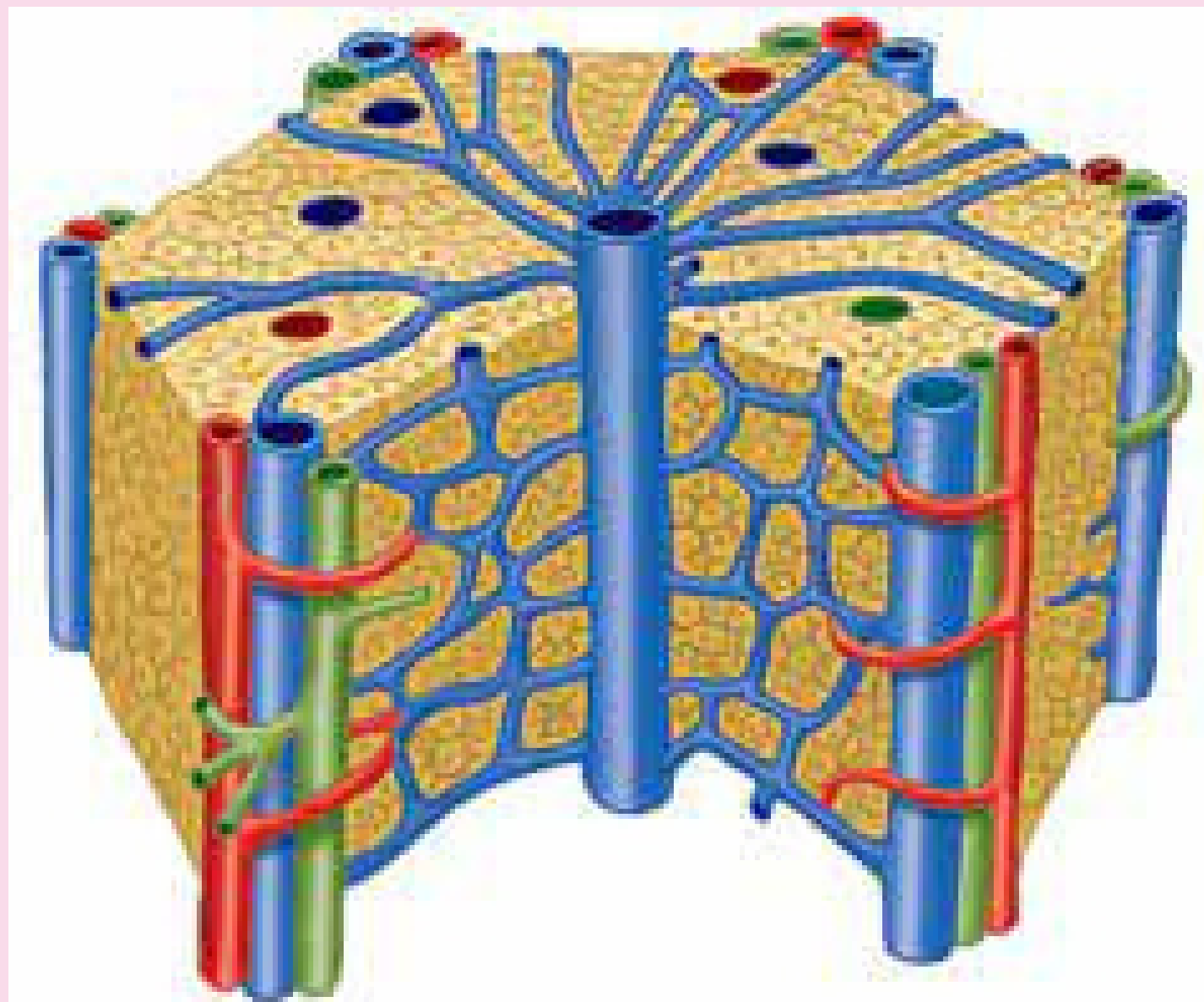


1000 lobuli



EPATOCITI

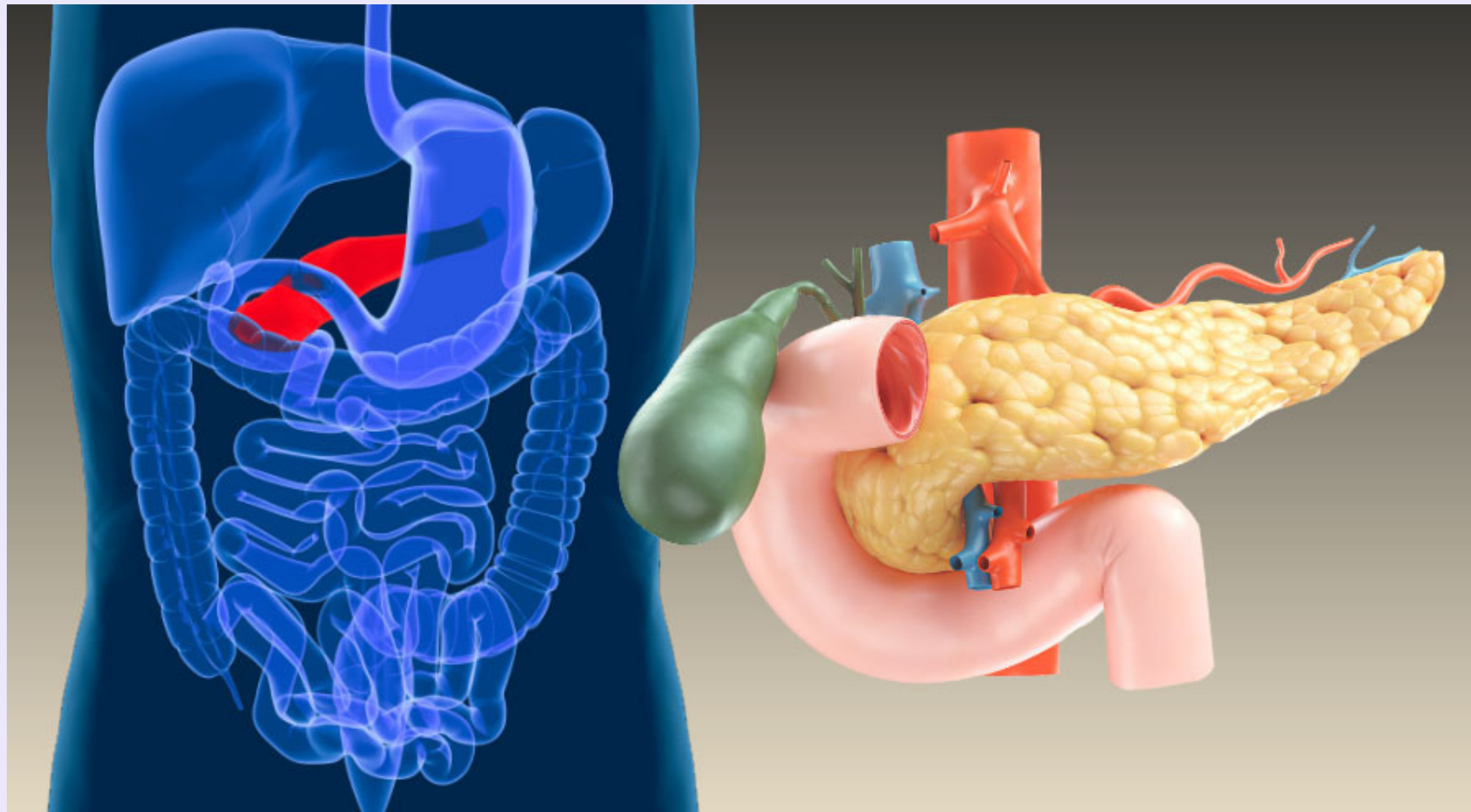
FEGATO



Funzioni

- Gluconeogenesi (indiretta gestione glicemica)
- Produttore di BILE (cistifellea)
- Metabolismo ERITROCITI
- Metabolismo FATTORI COAGULATORI
- Demolizione sostanze tossiche
- Catabolismo proteico

PANCREAS



Anatomia

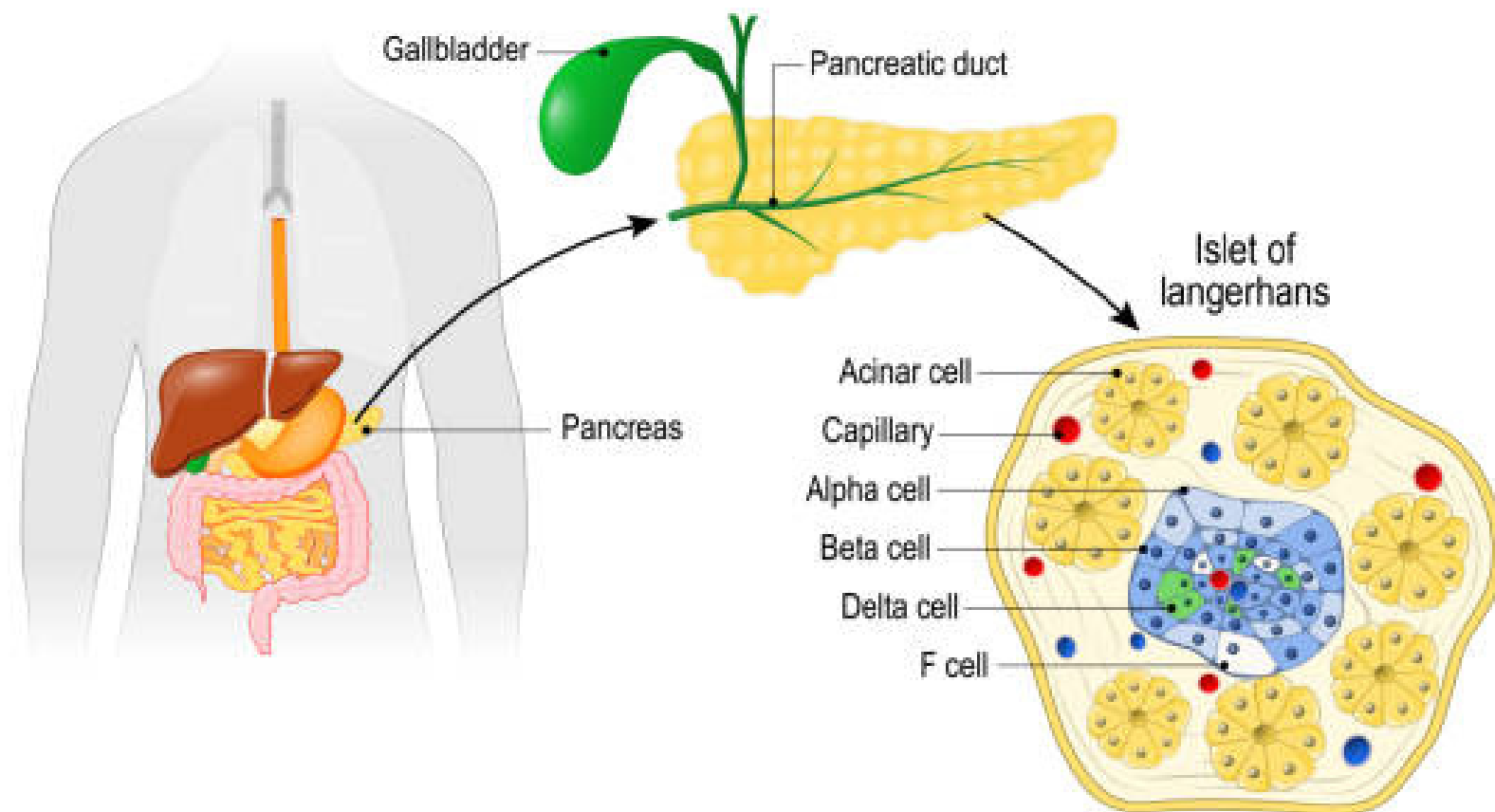
- Testa
- Corpo
- Coda

Funzioni

- Esocrina (acini pancreatici)
- Endocrina (Isole di Langerhans)
- D'assorbimento

ISOLE DI LANGERHANS

PANCREAS



01

CELLULE ALFA

Glucagone

02

CELLULE BETA

Insulina

03

CELLULE DELTA

Somatostatina

GRAZIE DELL'ATTENZIONE!

Eleonora Testi
Dott.ssa in Scienze Nutraceutiche
Istruttrice Mindful Eating

+39 3470527356
abcnutraceutica@gmail.com
IG abc_alimentazione

ABC
ALIMENTAZIONE INTEGRAZIONE
BENESSERE